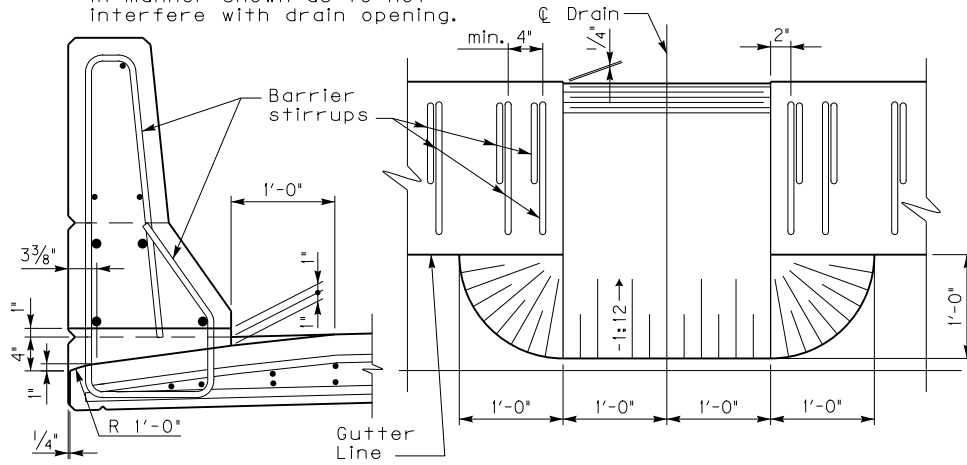


NOTE: Reposition barrier stirrups in manner shown as to not interfere with drain opening.

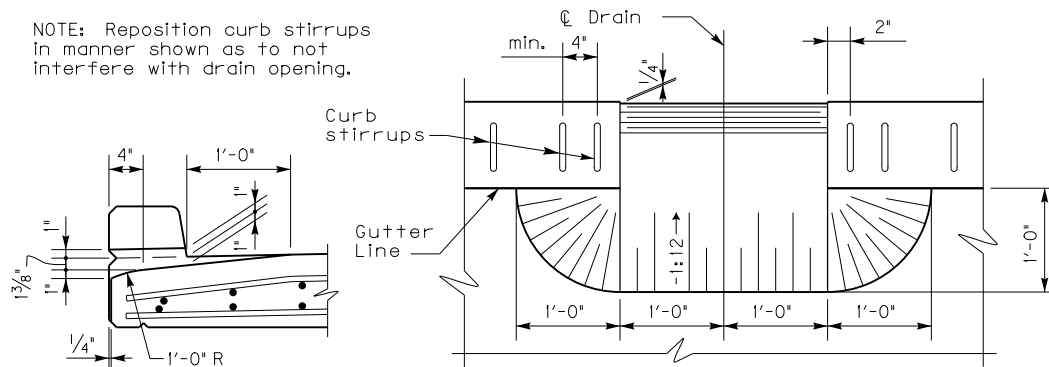


SECTION THROUGH DRAIN PLAN OF DRAIN (Barrier not in place)

NOTE: Field bend top transverse slab reinforcement in the area of the drain to maintain $2\frac{1}{2}$ " of concrete cover through the drain. Bend reinforcement approximately 1'-0" from the gutter line. Transverse slab reinforcement adjacent to the opening is not to be bent. Longitudinal reinforcement is not to be tied to the transverse reinforcement adjacent to the drain for a distance sufficient to allow the reinforcement to sag under the bent reinforcement in the drain area.

THROUGH BARRIER DRAIN DETAILS

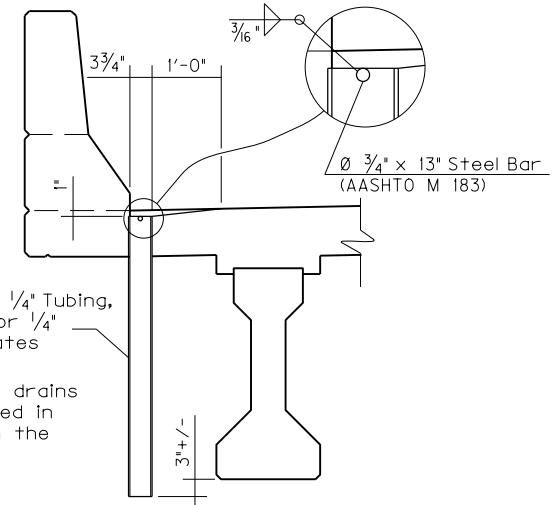
NOTE: Reposition curb stirrups in manner shown as to not interfere with drain opening.



SECTION THROUGH DRAIN PLAN OF DRAIN (Curb not in place)

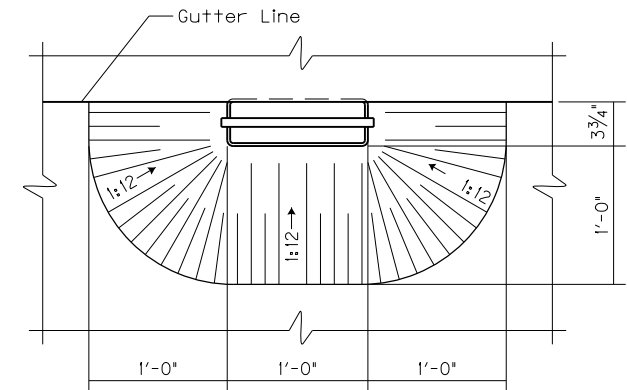
NOTE: Field bend top transverse slab reinforcement in the area of the drain to maintain $2\frac{1}{2}$ " of concrete cover through the drain. Bend reinforcement approximately 1'-0" from the gutter line. Transverse slab reinforcement adjacent to the opening is not to be bent. Longitudinal reinforcement is not to be tied to the transverse reinforcement adjacent to the drain for a distance sufficient to allow the reinforcement to sag under the bent reinforcement in the drain area.

THROUGH CURB DRAIN DETAILS



NOTE: Assembled drains shall be galvanized in accordance with the Specifications.

SECTION THROUGH DRAIN



PLAN OF DRAIN THROUGH DECK DRAIN DETAILS

KENTUCKY
DEPARTMENT OF HIGHWAYS

BRIDGE DRAINS

STANDARD DRAWING NO. BGX-015-03

SUBMITTED	<i>[Signature]</i> DIRECTOR, DIVISION OF BRIDGE DESIGN	12-01-99 DATE
APPROVED	<i>[Signature]</i> STATE HIGHWAY ENGINEER	12-01-99 DATE